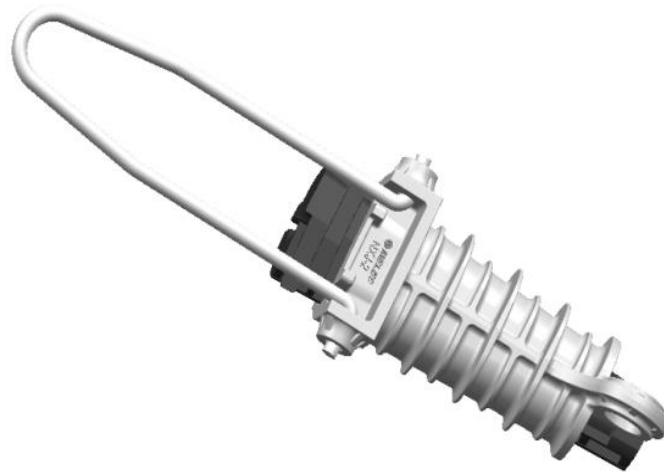


# TENSION CLAMP

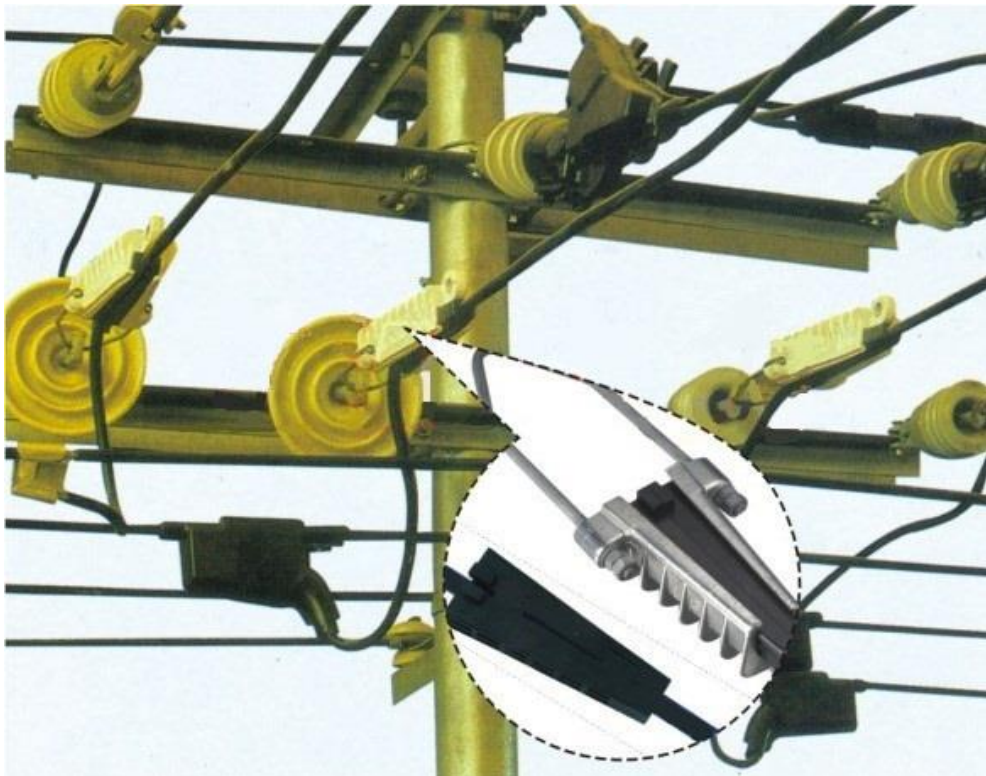
## NXJ series



## NXJ/L

## **NXJ APPLICATION**

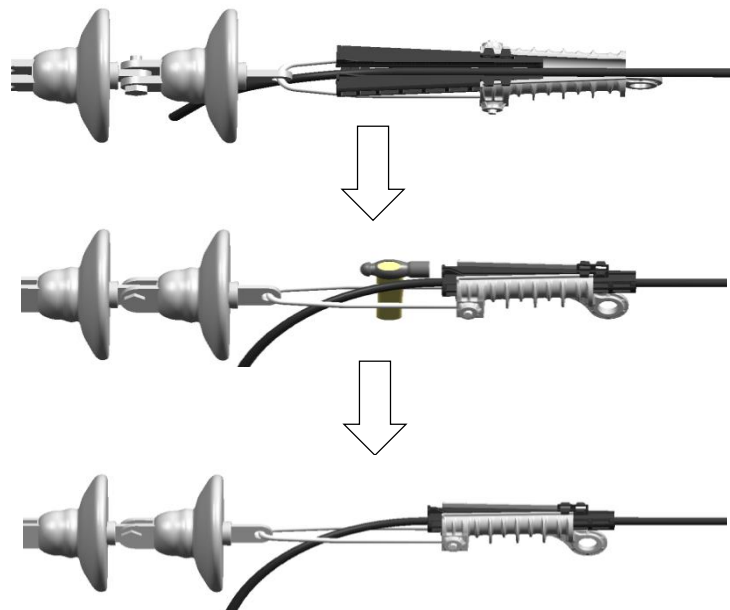
NXJ tension clamp is applicable for aerial lines up to 10kV and below overhead transmission lines. NXJ can fix insulated aluminum wire on the insulator at the corner or terminal tensile pole in order to anchoring and tightening aerial cables.



## **NXJ DESIGN**

NXJ clamp body is casted of high strength and corrosion resistant aluminum alloy. Wedges are made of weather resistant and anti-UV material with high mechanical strength. NXJ/L clamp hook is made by steel wire with hot galvanizing.

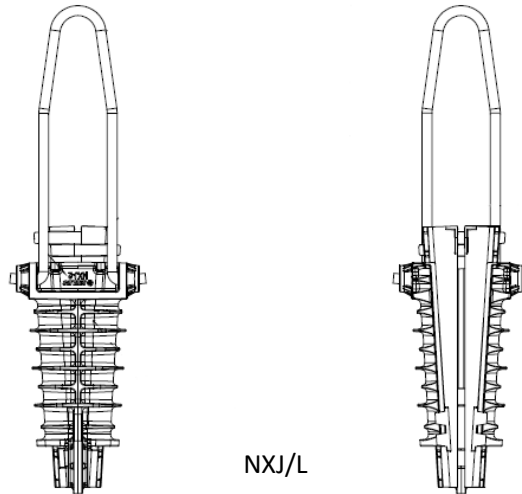
Installation as below:



Key Feature:

1. No need stripping of cable insulation
2. No loose part during installation
3. Easy and efficient installation
4. Long service life

## TYPE SELECTION



Type	Conductor Size (mm <sup>2</sup> )		Failure Load (kN)	Pack (pcs)
	1kV	10kV		
NXJ35-50/L	35-50	/	7.5	28
NXJ-10-35-50/L	/	35-50	7.5	28
NXJ70-95/L	70-95	/	14.5	28
NXJ-10-70-95/L	/	70-95	14.5	28
NXJ120-150/L	120-150	/	22.1	15
NXJ-10-120-150/L	/	120-150	22.1	15
NXJ185-240/L	185-240	/	36.5	12
NXJ-10-185-240/L	/	185-240	36.5	12